

Microsoft
GOLD CERTIFIED
Partner



TEKLYNX® **LABEL ARCHIVE**



SOFTWARE SOLUTIONS

Product Identification & Product Tracking Software

LABEL ARCHIVE Presentation

- Product Overview
- Features
- Benefits
- Architecture
- LABEL ARCHIVE Server
- LABEL ARCHIVE Client
- How it works/compatibility
- Target Markets

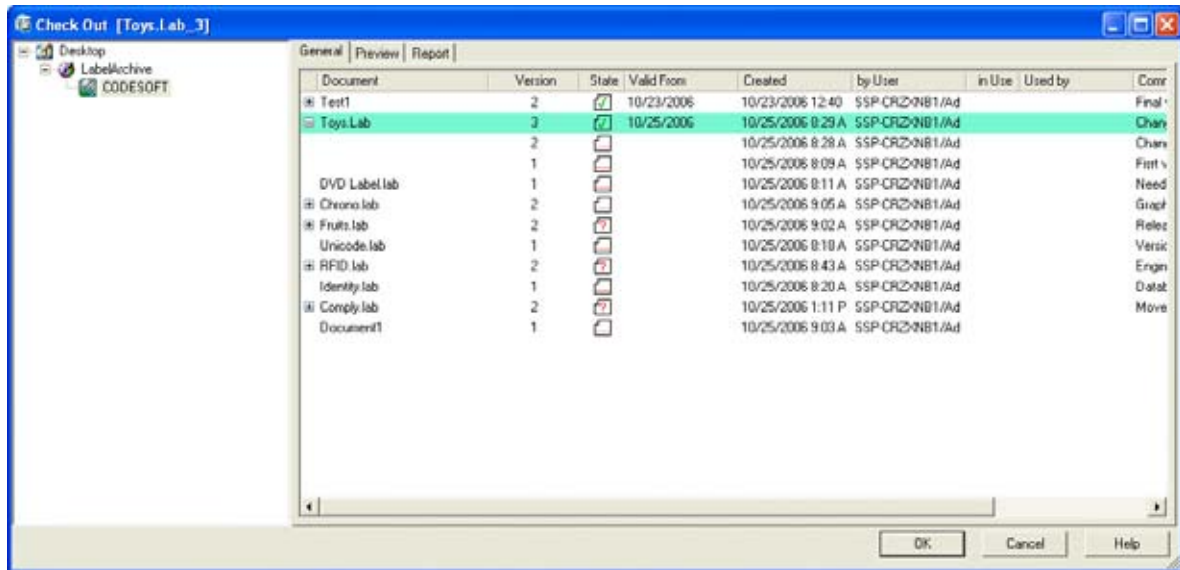
LABEL ARCHIVE

- Security and traceability for bar code and RFID label design and production environments
 - Archiving – Complete label version control
 - Approval – Mandatory rules for labels to reach production
 - History – Complete logging of variable data, stored by label version
 - Security – Limited user access set by administrator
- Designed to work with TEKLYNX' CODESOFT and LABELVIEW label design and printing software
- For Windows® 2000 SP4, Windows XP SP2 or Windows Server 2003 SP1
- Available in 5 different languages
- Designed to work with TEKLYNX' CODESOFT and LABELVIEW label design and printing software
- Client Server mode or standalone (1 PC)



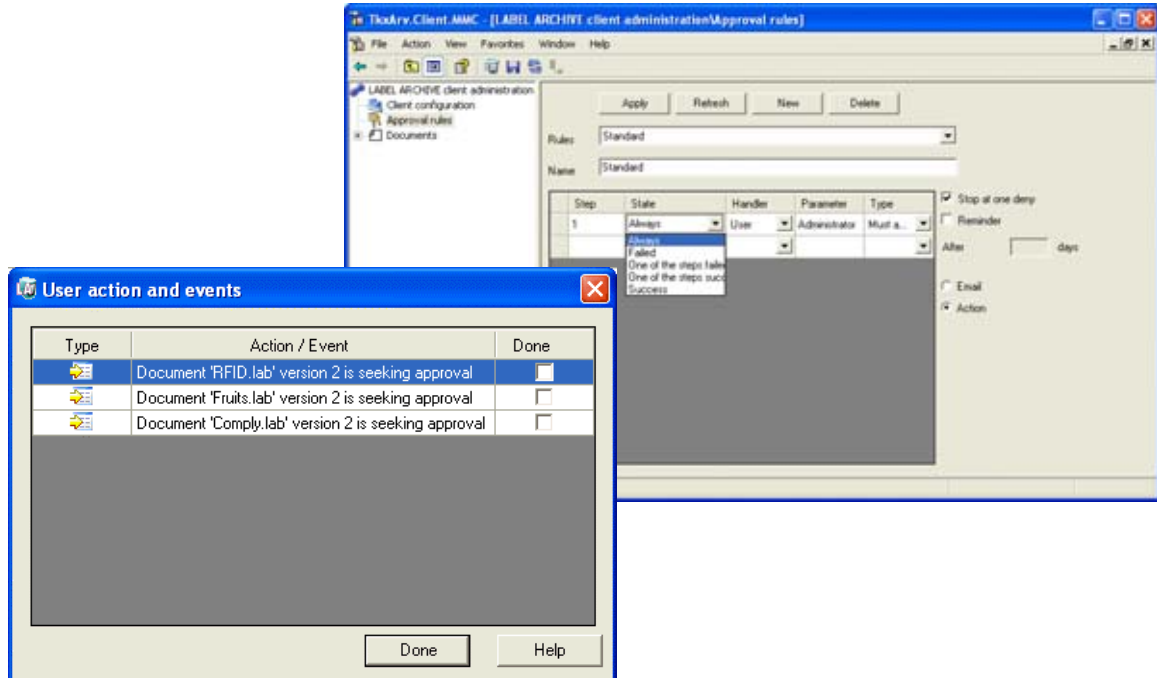
Archiving

- Complete & automatic label version control with access to older versions (dependant on user rights)



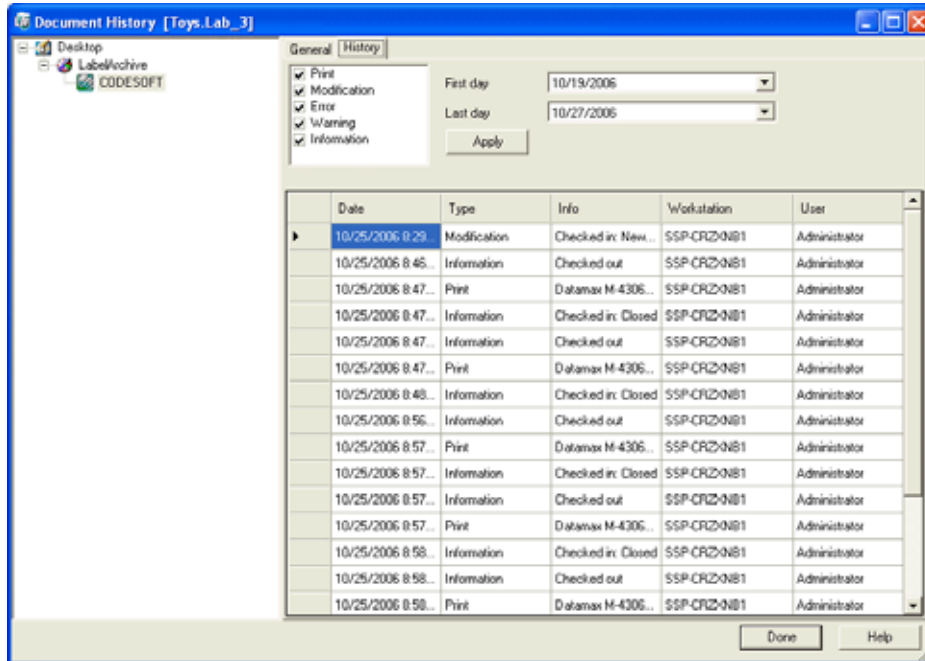
Approval

- Approval rules mirror business needs
- Users must approve before printing is allowed



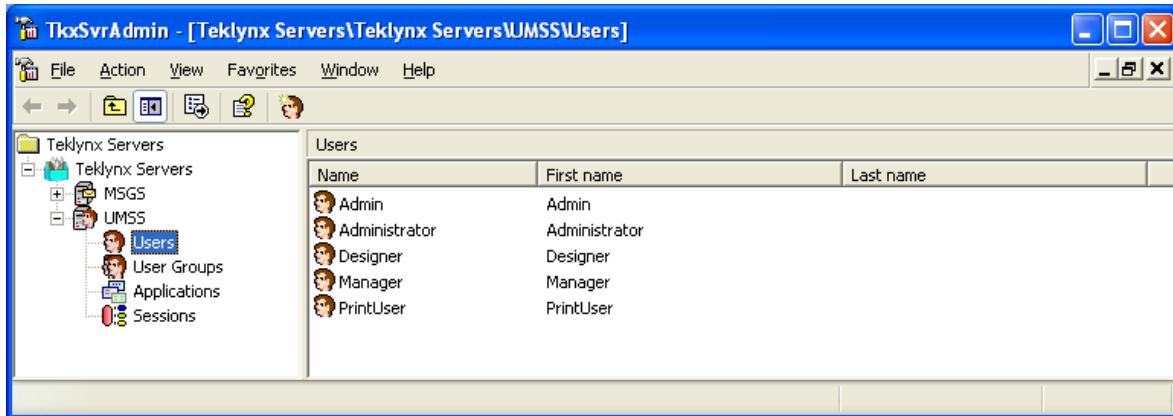
History

- Complete document history including all printed data (Who, What, Where & When)



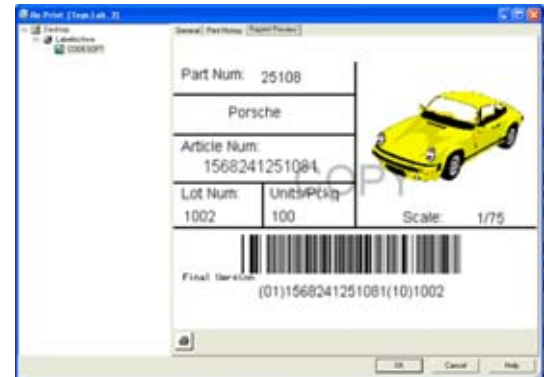
Security

- Users and user groups created and maintained by the Administrator
- PrintUsers can only open & print labels



Other Features

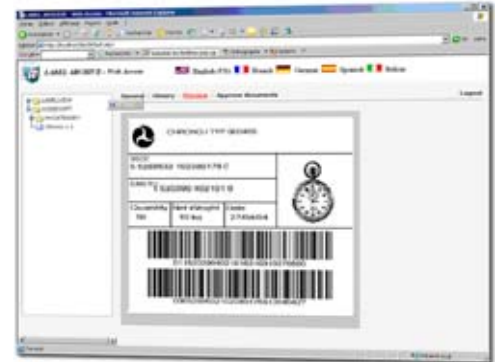
- Messaging
 - Provides instant communication through email, SMS, etc.
- Approval
 - Choose 2 or 3 state approval
 - Draft → Final
 - Draft → Approval → Final



Other Features

Remote Approval

- Remote users can be setup and defined in the approval process
- Web application accessible from any Web browser on Internet or Intranet
- Upon successful user Web authentication, this module establishes a connection with LABEL ARCHIVE Server, and gives access to limited functionalities to:
 - View documents and history records,
 - Approve documents before delivery in production

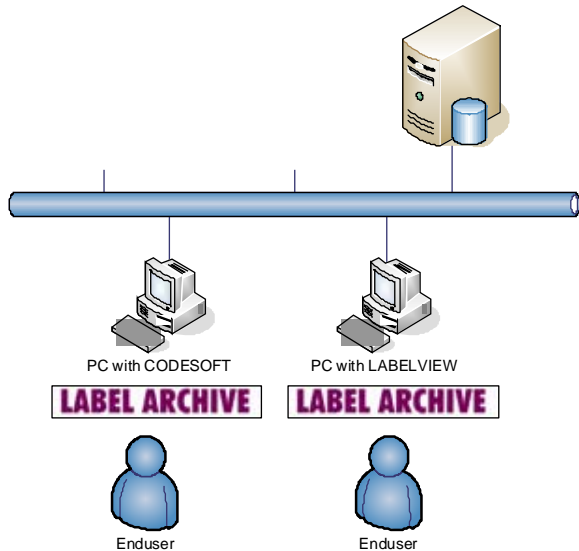


Benefits

- Secures the label design and printing process
- Instant information; know who printed what and when
- Ensures only approved labels enter production

LABEL ARCHIVE Architecture

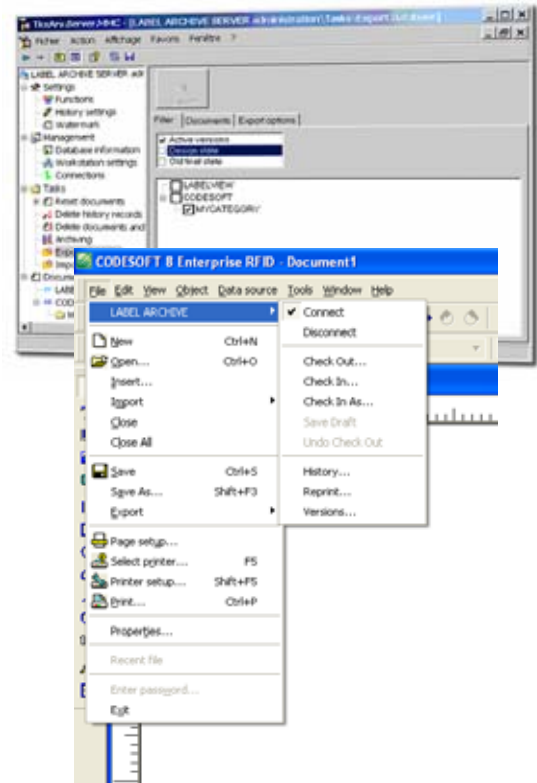
LABEL ARCHIVE Server



- Server
 - Secure centralized database
 - Label Design objects
 - All history & event data
 - User/user group management
 - Licensing
- Client
 - Access control layer between End User & CODESOFT or LABELVIEW

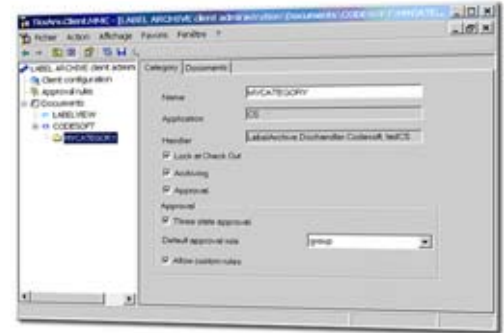
LABEL ARCHIVE Server

- Centralized database, driven through a Windows® service
- Establishes a connection with different data sources and processes all client requests: Check In, Check Out, Print History, Document Approval, etc.
- Utilizes a User Management and Messaging System to perform user configuration and messaging functions



LABEL ARCHIVE Client

- Add-on to the Label Designer application? Label archive connects to the Server and checks user rights
- If the connection is successful, the user is allowed to perform different document management actions such as check in and check out, and access to the centralized label storage database
- Actions allowed depend upon the security settings and permissions



How it works

- **LABEL ARCHIVE Server typically runs on a server machine**
- **In the internal network, any client station which has a Label Designer and the LABEL ARCHIVE Client add-on can interact with the server at any time**
- **LABEL ARCHIVE can also be installed as a standalone desktop application**
- **Compatibility**
 - CODESOFT 8.00.08 & LABELVIEW 8.00.03
 - LABEL ARCHIVE is available with software key protection
 - LABEL ARCHIVE work with CODESOFT Enterprise, Runtime or Network

Target Markets

- LABEL ARCHIVE addresses the label control standards demanded by several industries including:
 - Healthcare
 - Pharmaceutical (CFR21 Part 11)
 - Manufacturing (GMP)

